

Coastal and maritime spatial planning in Pärnu Bay area in
Estonia and coastal municipalities of Latvia

Maritime spatial planning in Pärnu Bay area

Raine Viitas

Planning adviser



Pärnu County Government

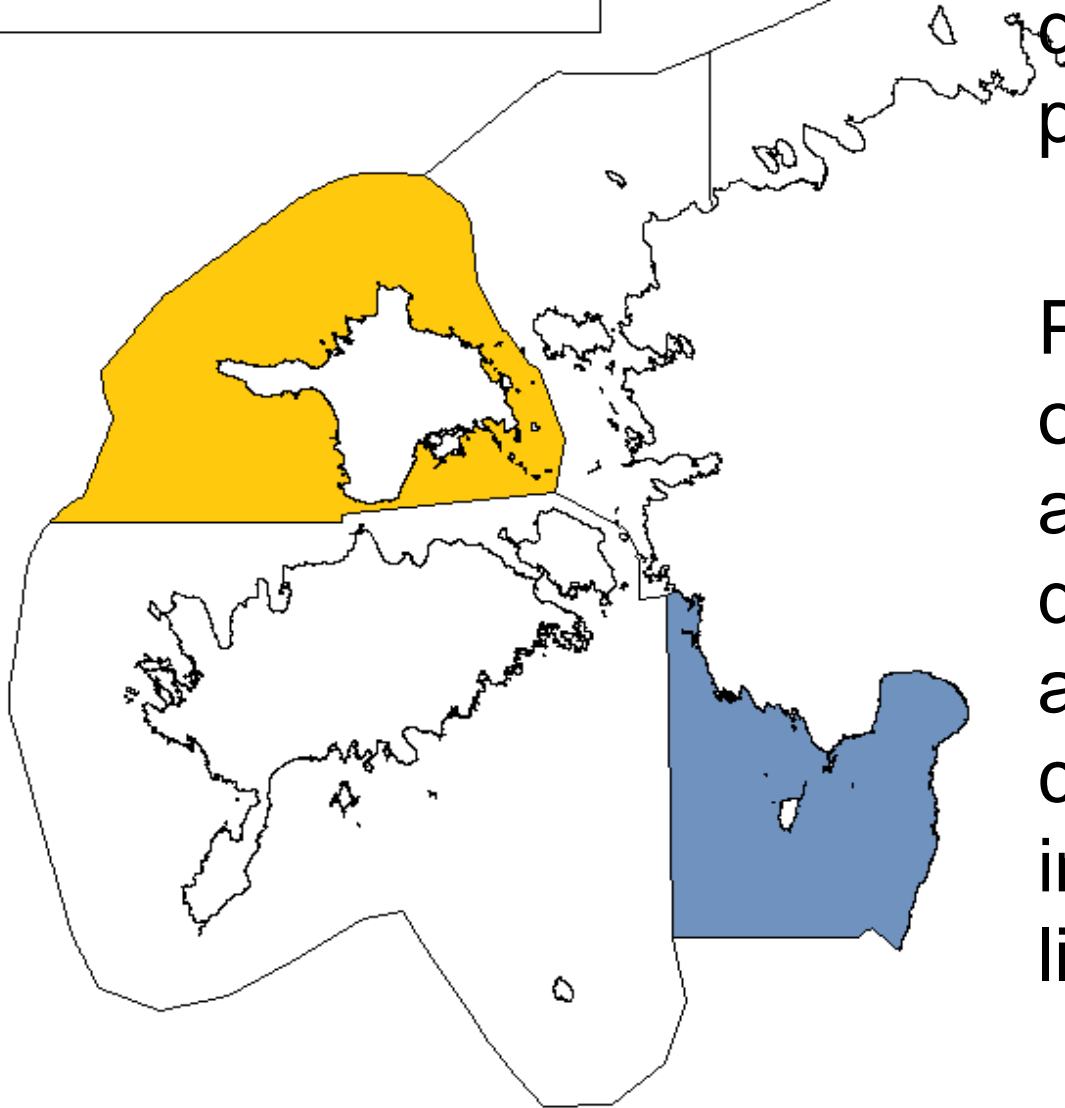
28.03.2014 Saulkrasti



- Pärnu County Government is the leader of the planning process.
- Consultant and SEA expert is Hendrikson&Ko OÜ
- Planning support is funded by the EST-LAT program
- Planning material is available on website:
parnumeri.hendrikson.ee

Planeeritavad alad territoriaalmeres

-  Hiiu maakonnaga piirnev mereala
-  Pärnu maakonnaga piirnev mereala



Estonian State Government initially determined planning area.

Planning area is only maritime area and does not cover directly the land area. The plan will consider the most important functional links.

The objective of the plan

Determine spatial use of the sea on Pärnu bay area

It will consider:

- different sector-based interests,
- economical, social, cultural and environmental development long-term trends and needs.

- BaltSeaPlan project
- Gorwind project



2009 Planning the future 2012 of the Baltic Sea

Home

- BaltSeaPlan Recommendations
- Maritime Strategies
- BaltSeaPlan Vision 2030
- Pilot Maritime Spatial Plans
 - Pomeranian Bight
 - Middle Bank
 - Danish Straits
 - Lithuanian Sea
 - Pärnu Bay
 - SEA Western Gulf of Gdańsk
 - Hiumaa and Saaremaa
 - Latvian
- Tools for MSP
- Web-advanced MSP Tool
- Reports and Publications
- BaltSeaPlan Events
- Partners
- Events
- Downloads
- Contact

Pärnu Bay

Responsible
Estonian Marine Institute of University of Tartu, Baltic Environmental Forum Estonia



The Pärnu Bay pilot area – located in the northern part of the Gulf of Riga – is characterised by intensive human uses as well as problematic environmental conditions. In addition to traditional uses such as shipping, fishing and recreation activities, there are also plans for offshore wind parks as well as an expansion of Pärnu Port. The main environmental issue is eutrophication, which manifests itself in increased biological production and worsened light conditions for the seabed while at the same time positively affecting fish populations. The BaltSeaPlan Report N° 13 “Towards a Pilot MSP for Pärnu Bay” shows the stocktake of the area including methods for how to generate information in case of missing data sources. It also describes the stakeholder involvement and conflict analysis undertaken. In view of missing legislation for MSP in Estonia at the current stage it does not go the full cycle by actually proposing an MSP for the area.




This project is part-financed by the European Union (European Regional Development Fund)


Corwind Intranet

Home | Press releases | News | Results | Galleries


Home

- Info
- Contacts
- Partners
- Links

Supporters



Info



Project

The Gulf of Riga as a Resource for Wind Energy (GORWIND)

Total budget –1 444 612 EUR
ERDF contribution –1 227 820 EUR

Acknowledgements

This project is financed by Estonia-Latvia Programme and Environmental Investment Centre (KIK). Estonia - Estonia - Latvia Programme is implemented according to the principles of the European Territorial Cooperation and it supports cross-border cooperation between Estonia and Latvia. It is funded by the European Regional Development Fund (ERDF), the Republic of Estonia and the Republic of Latvia.

Project Lifetime
01.11.2010 - 31.10.2012

Background

- Due to the opening of the energy market in EU the energy business will become international by nature.
- The use of renewable energy sources are encouraged by EU authorities.
- Wind energy has a high potential in the Gulf of Riga region and development of wind parks is planned in the Gulf of Riga.
- Accurate information of marine wind field with high spatial and temporal resolution is needed.
- Rough ice conditions in the Gulf of Riga could impose a threat to construction and operation of offshore wind parks.
- The Gulf of Riga is an important habitat area for marine mammals and birds. They could suffer the most from operational activity of wind parks.
- People are afraid that their living standards may decrease due to the development of the wind parks.
- Latvia and Estonia could benefit from the wind parks in the Gulf of Riga. The decisions about exploitation of the wind energy on the both sides of the Gulf of Riga should be harmonized.

The Aim of the Project


- The project aim is to produce policy-relevant and scientifically based information on wind energy fields, the most affected key natural species populations and social reactions of and economic benefits for the entire Gulf of Riga region.

Objectives

To provide decision makers and potential wind park developers in the Gulf of Riga with

- Reliable marine wind information from coastal wind measurements, high resolution remote sensing data, operational atmosphere model and ensemble of Regional Climate models.
- Accurate high resolution information about ice conditions for different

Project Area



Cooperation and involvement

- County plan is provincial agreement, which will involve different stakeholders and partners cooperation and involvement.
- Everybody can make proposals and objections during the planning process.
- Plan has to consider with SEA results
- Plan completed during working progress
- Working meetings with different stakeholders and public displays and discussions!!

Work Meetings

- Different themes – fishing, tourism, small harbour)
- Different stakeholders, representatives.
- **Governor form Cooperation's group from different ministries, civil services, stakeholder representatives to share information, to discuss problems, to consult.**

Work meeting, tourism



Cooperation with Latvia

- Plan impact are over the border (SEA is international), cooperation between the ministries of the Environment

Ministry of Environmental Protection and Regional Development of the Republic of Latvia, Environmental State Bureau

Review about the

- SEA programme and goal of the plan (July-Aug 2013)
- SEA report and plan before the adaption (Oct –Nov 2014)
- Determinated plan (June 2016)

Pay attention to activities planned to be held near the border (offshore wind parks sites, electrical cables)!

Planning schedule (1)

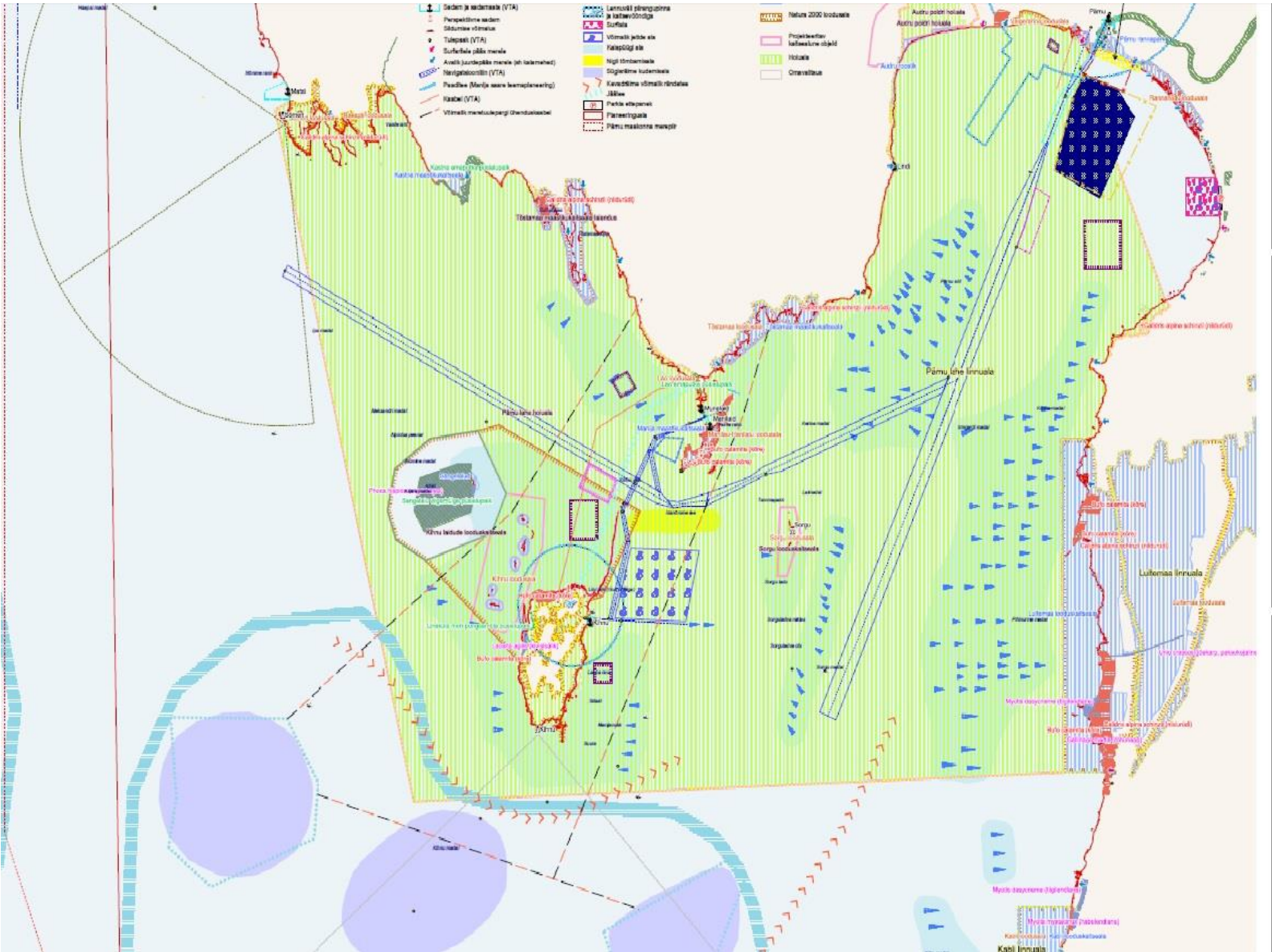
Elaboration of Initial outline for the plan and SEA program (March – June 2013)

- Public display on web 13-27.05.2013, discussions 5-7.06 2013
- SEA programme approved by the Estonia Ministry of the Environment October 2013

Preparation of the drafts (July – Dec 2013)

- Preparation of the first draft, public display on web 19.11-6.12.2013, discussions 5-6.12.2013
- Preparation of the second draft and SEA report, public display on web and paper 15.-23.04.2014, discussions 28.-29.04.2014.
- Preparation of the third draft and SEA report, public display and discussions (Oct. 2014)

Interests of the stakeholders



First draft, public discussion (80 persons)



Planning schedule (2)

Preparation of the third draft, final plan and SEA report (Oct 2014 – April 2016)

- The concertation (Oct 2014-Febr 2015)
- Adaption of the plan and publication, SEA report publication (March-June 2015)
- Correcting the planning material (July-Oct 2015)
- Approvment of the SEA report (Oct-Dec 2015)
- Supervision of the plan (Nov 2015- March 2016)
- Determination of the plan (April 2016)

Regarded topics (1)

- Multi-functional maritime transport development
- Fish-resource economical management.
- Industrial fishing and traditional coastal fishing development, coastal permanent settlement preservation and places of work diversification.
- Tourism and recreational activities diversification, to see and from the sea availability improvement.
- Marine environment storage and economical management.

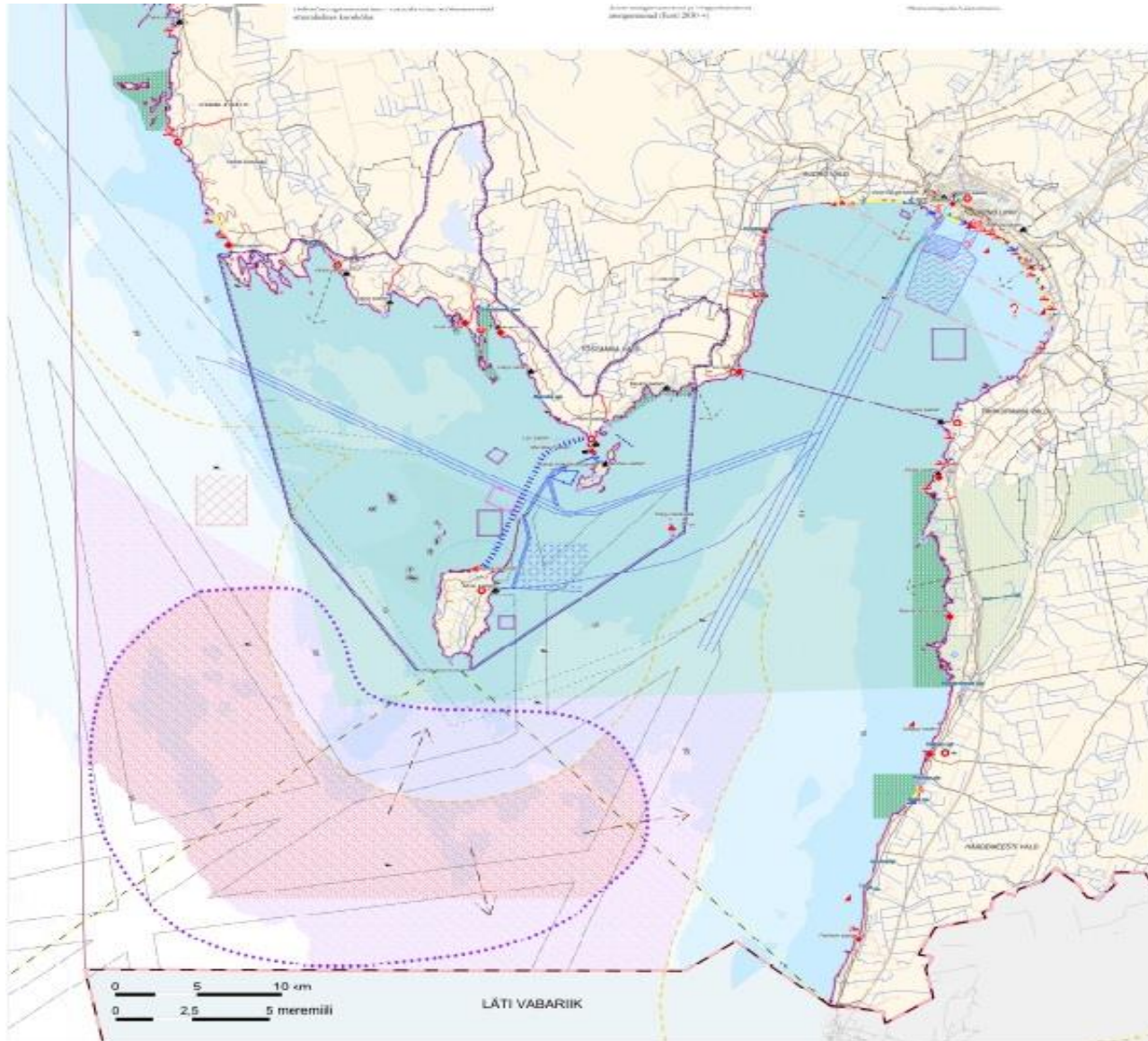
Regarded topics (2)

- Technical infrastructure (not marine transport).
- Renewable energy (also wind energy) development and international energy network creation.
- Marine security ensuring.
- Government defensive potential ensuring.
- Mineral recourses economical managing.
- Aquaculture.
- Marine archaeology.

Different interests – conflicts?

- fairways vs. ship wreck burial places
- fairways vs. ice road
- fishing area vs. the dumping ground (harbour deepen)
- Nature conservation area vs. human and economical action
- Resort city Pärnu vs. port city Pärnu
- Fishing vs aquatic sport area (water scooter, sailing)
- Surf area /swimming area vs. fishing area
- Wind farm vs. fishing
- Wind farm vs. nature tourism

Second draft is ready to publishing



The planning solution

- Privileged usages marine area (priority usage) – in concrete area and time (fairway, ice road, sailing, swimming, ship wreck burial places)
- Free, open marine area - allowable for all usage
- The perspective development area (wind farm area) – not guaranteed to build wind farm but it`s area, where is allowed to think developing wind farm).
- The recommended usage area – there is no priority but it need`s to direct – water scooter.

The planning solution 2

- Aquaculture – there are no areas, in Pärnu bay prohibited aquaculture, when it`s take place nutrient accrue to marine ecosystem
- Proposal to prohibit to use the water scooter in Pärnu bay (Tuuraste stream - Uulu canal) in period 1.05-31.07.
- Proposal to determine local government`s territorial borders to the sea – it`s local governmental special territory 1 sea mile– (right to compile the plans (general and detail plans), to issue building permits, to give the permission of use, to give the concertation)

The planning solution 3

- We need to determine conditions to develop wind farms (windmills are not closer to Latvian border than 5 km, coastal not closer than 10 km. Need to make fishing survey and visualisation and.....)
- We need to find the suitable dumping grounds
- We need to find suitable places for ship wreck burial
- We need to find access to sea for windsurfer (nets free area?)

Information

<http://parnumeri.hendrikson.ee>